



MID-FLORIDA SIGNS & GRAPHICS

3602 Parkway Boulevard Suite 2 Leesburg, Florida 34748

OFFICE 352.787.3882 FAX 352.787.9427

www.midflsigns.com

FL ES12000754

ALWAYS A GOOD SIGN

Products and Services

Mid-Florida Signs and Graphics has been proudly providing Florida signage since 1941 offering extensive experience in architectural & electrical Signage.

Professional consultation and recommendations for long term signage solution offering the best overall value and quality.

Highly trained staff providing, project management, fabrication, and installation services.

Specialties;

- Exterior freestanding and wall signs
- Decorative interior signage, interior digital signage, and ADA signage
- Exterior LED digital signage (Largest Watchfire dealer in Florida)
- Wayfinding & Directional signs
- Decorative aluminum awnings, canopies, and shutters

• Affiliations

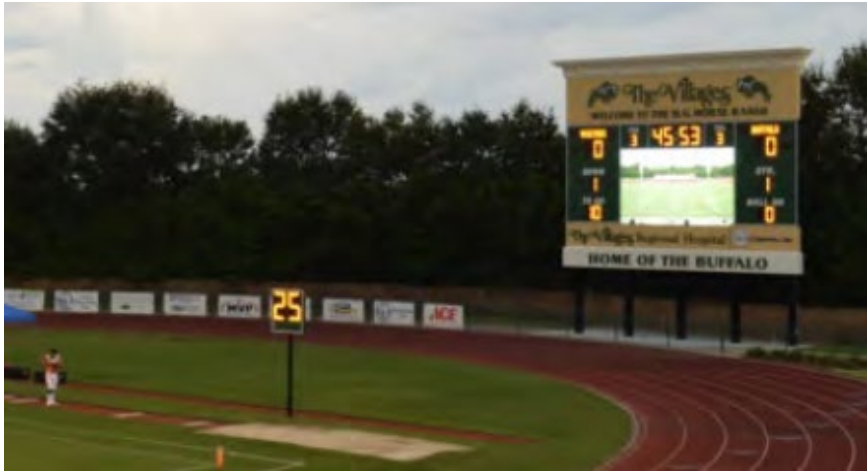




VILLAGES BRIDGE PROJECT

The Villages, FL

Furnish and install Eight (8) sets of reverse illuminated fabricated aluminum channel letters for bridges spanning the Florida Turnpike & Hwy 46



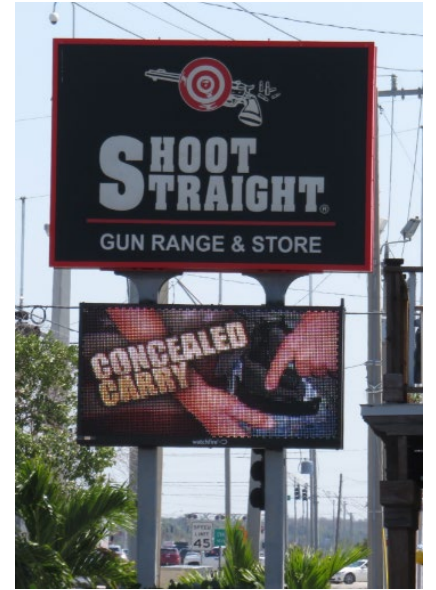
THE VILLAGE HIGH SCHOOL SCOREBOARD

Furnish and install one (1) 42' tall scoreboard with Watchfire 11'x 20' digital display. Display is connected via fiber optic for live video and instant reply capability.



GIANT RECREATION WORLD

Mid-Florida Signs & Graphics has provided signage for Giant Recreation World's Three (3) locations including Six (6) Watchfire digital message centers, One (1) 60' tall pylon, One 50' tall pylon, Two (2) 20' tall pylon, one (1) 12' monument sign, and various wall signs.



SHOOT STRAIGHT GUN RANGE & STORE
Mid-Florida Signs & Graphics has provided signage for
Eleven (11) Shoot Straight locations



FLORIDA'S LARGEST WATCHFIRE DEALER



FLORIDA'S LARGEST WATCHFIRE DEALER



MACHINE GUN AMERICA

KISSIMMEE, FL

Furnish and install one (1) double sided 36' tall
pylon sign



ROCKSTAR HARLEY DAVIDSON

Ft Myers, FL

Furnish and install one (1) double sided 10' x 20' double sided digital message center visible to I-75

